

Flood hazard monitoring using multi- temporal SPOT-XS imagery

Results of the exercises

Figure 1: Image processing stretch mfl87_1s

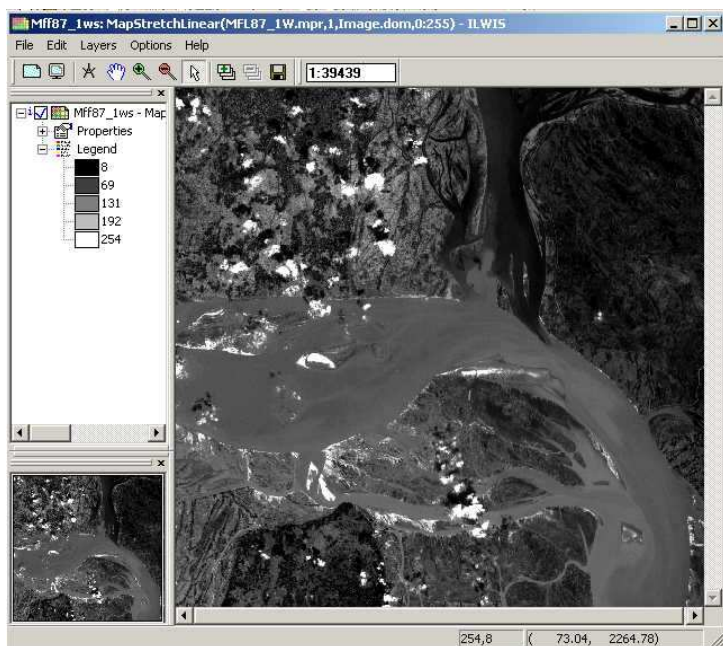


Figure 2: Section 1.2 creating a false color composite moderate flood

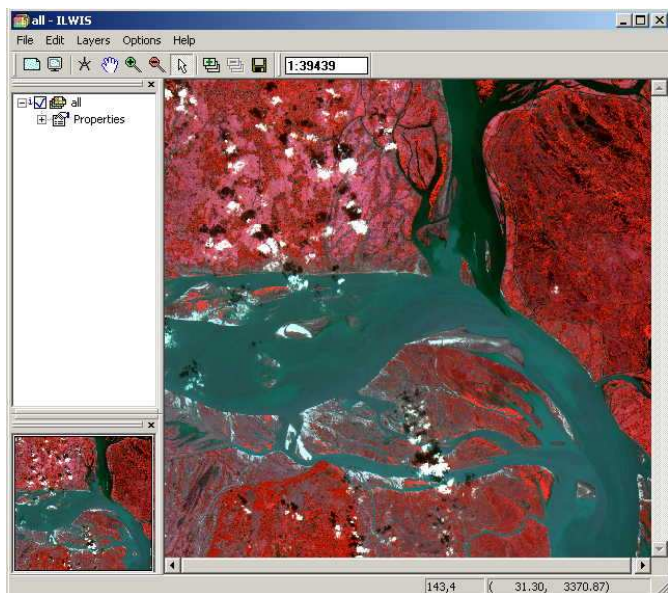


Figure 3: Section 1.3 Computation of band ratio's

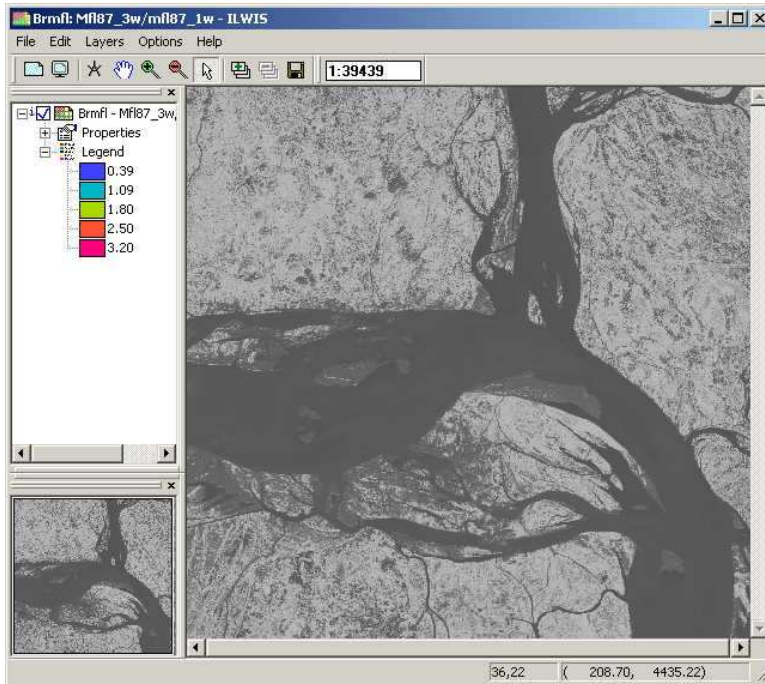
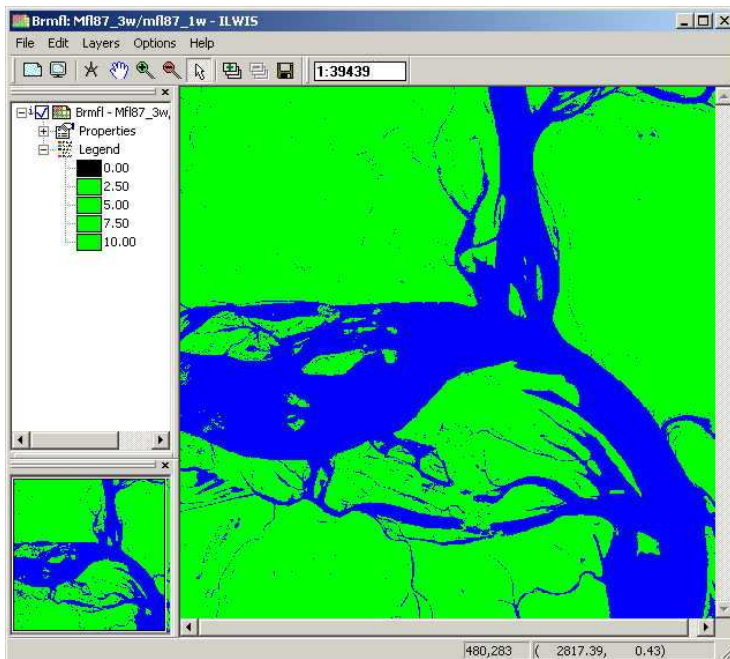


Figure 4: Section 1.3 Computation of band ratio's and slicing operation, moderate flood



Flood hazard monitoring using multi temporal SPOT-XS imagery

Figure 5: Section 1.3 Computation of band ratio's and slicing operation, severe flood

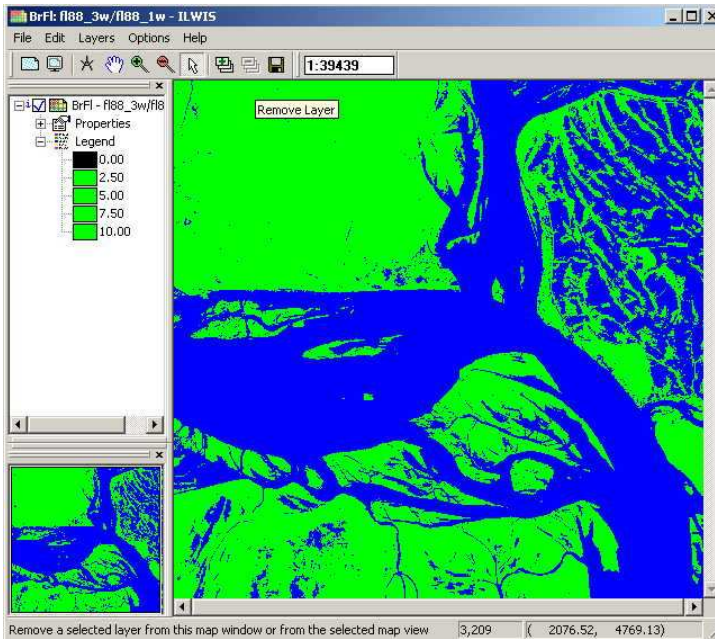


Figure 6: Section 1.3 Computation of band ratio's and slicing operation, dry season

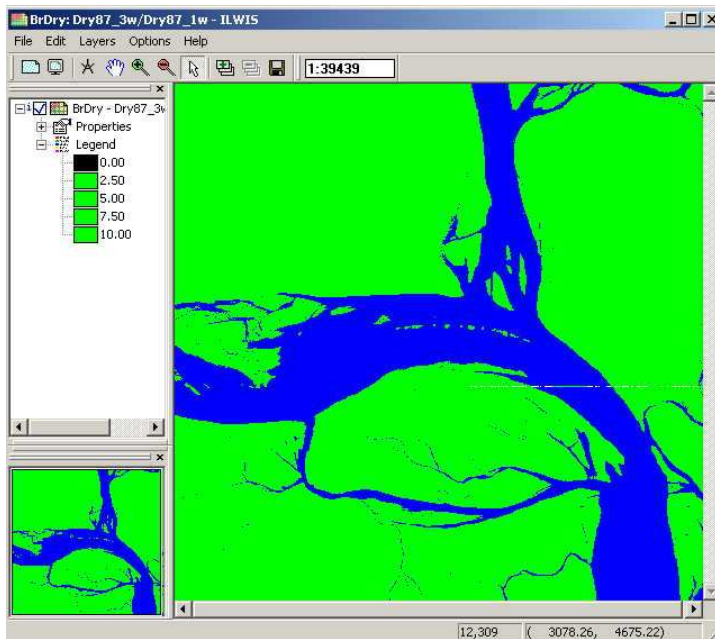


Figure 7: Section 1.3 Color composite severe flood 1988

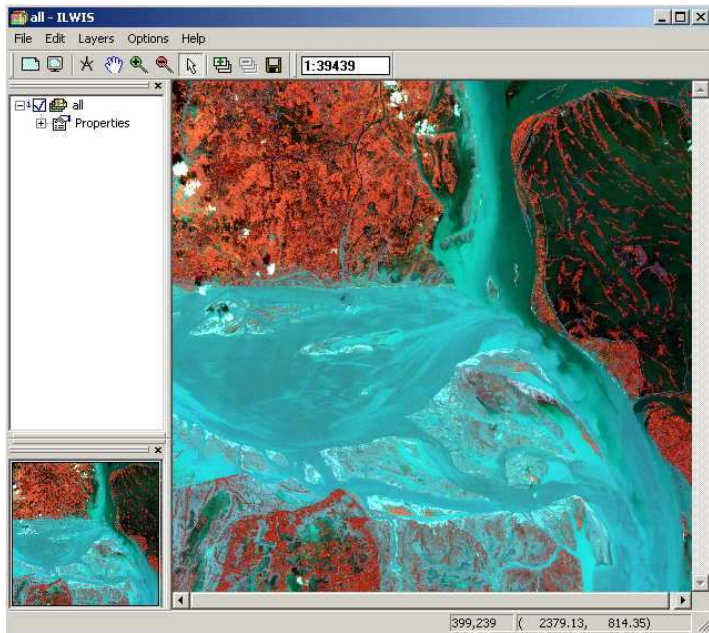


Figure 8: Section 1.4 Combining the three water level maps

