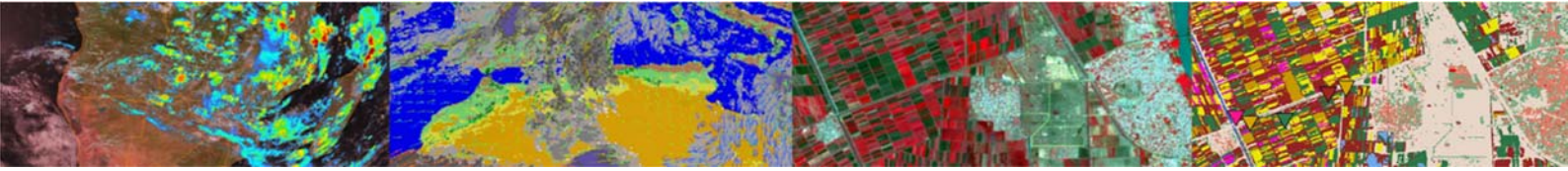


Downloading and Installing ILWIS

Bas Retsios, Ben Maathuis and
Harm-Jan Benninga, 09-04-2020

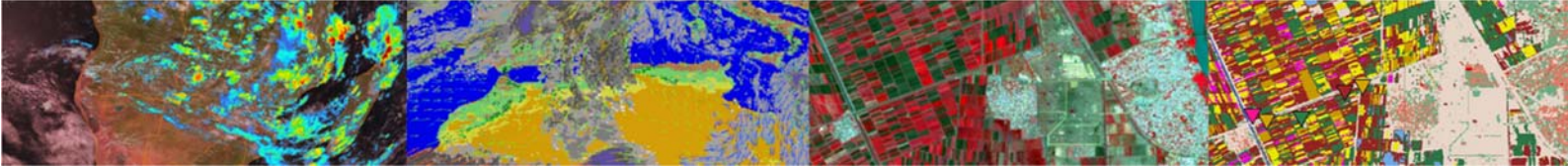
OpenCourseWare





Contents

Downloading and Installing ILWIS	1
1. Introduction	2
2. Download	2
3. Unzip	3
4. Create an ILWIS Shortcut on the Desktop.....	6
5. Start ILWIS for the first time	7



1. Introduction

ILWIS (the Integrated Land and Water Information system) is free and open source GIS software that is developed at ITC and 52north to support education and research in geo-sciences. The software is optimized to also perform smoothly on computers that are a bit older. It works on 32 and 64 bits Windows 7 and newer.

2. Download

The latest official version of ILWIS (currently version 3.8.6) is freely available at <http://52north.org>. However, this document focuses on downloading and installing the most recent unofficial version from the following download link, which includes the newest functionality and bug fixes:

<https://filetransfer.itc.nl/pub/52n/ILWIS386/Software/>

The versions found in this link are updated more frequently, while 52north.org hosts the official releases. When navigating to this link, a list of files appears. The files correspond to several ILWIS versions.

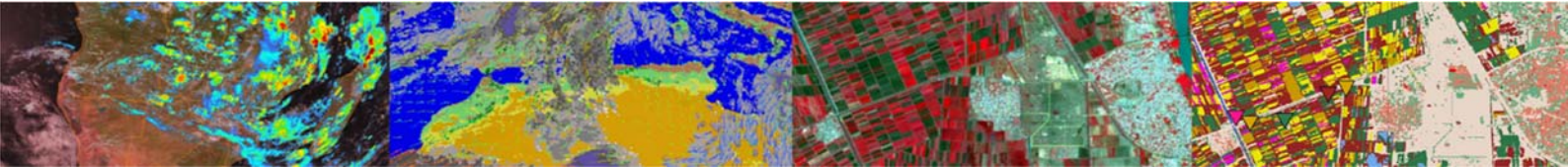
Figure 1: File repository link

<u>Name</u>	<u>Last modified</u>	<u>Size</u>	<u>Description</u>
Parent Directory		-	
ILWIS386_20200210.txt	2020-02-03 14:37	64	
ILWIS386_20200210.zip	2020-02-10 15:33	27M	
ILWIS386_20200311.txt	2020-03-11 12:33	208	
ILWIS386_20200311.zip	2020-03-11 12:37	27M	
ILWIS386_20200316.txt	2020-03-16 17:18	265	
ILWIS386_20200316.zip	2020-03-16 17:48	27M	
ilwis386setup.exe	2020-01-20 14:51	28M	
ilwis386setup.txt	2020-01-16 11:36	6.1K	

ilwis386setup.exe installs ILWIS386. This is the official version of January 2020, and is same version that is downloadable from <http://52north.org>. The other versions are newer, and have enhanced functionality or bug fixes that came after ILWIS386 was released.

The filename contains the date of the version. For each date, two files are available: one zip file with the software, and one corresponding text document describing the changes.

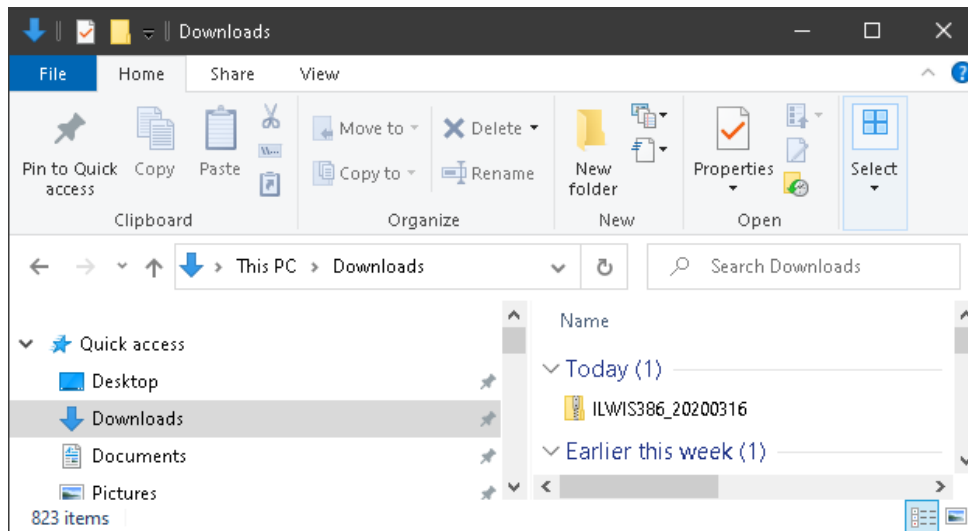
Choose the latest version and click on the zip file to download it. At the time of writing this document this was ILWIS386_20200316.zip (version of 16-March-2020).



3. Unzip

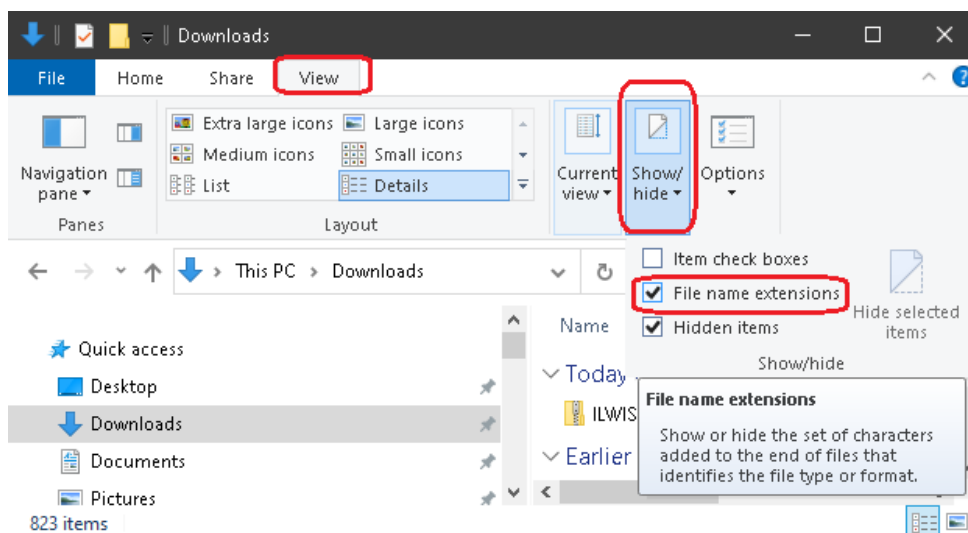
When downloading is done, the file is placed in your “Downloads” folder or another folder that you selected yourself (depending on your internet browser settings). Use the Windows Explorer to navigate to the downloaded zip file. Sort the files by date if you have difficulty locating the file.

Figure 2: Downloading the zip file in the downloads location



If you see the filename like above, without the extension .zip, make a change in the settings of Windows Explorer to show filename extensions. In the menu of the Windows Explorer, go to View → Show/hide, and enable the File name extensions according to the figure below.

Figure 2: Show the zip filename extension



This will show the complete filename in the Windows Explorer, including the extension .zip. See also the figure below.

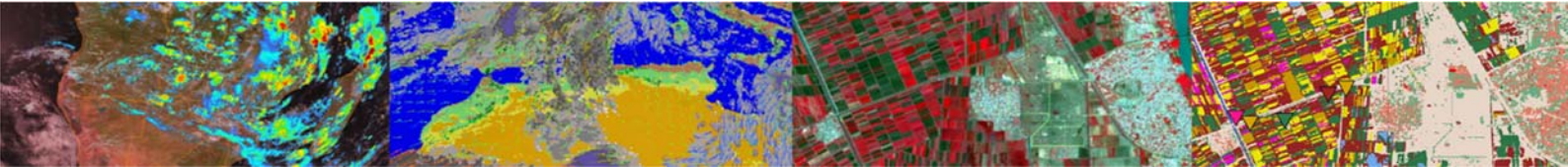
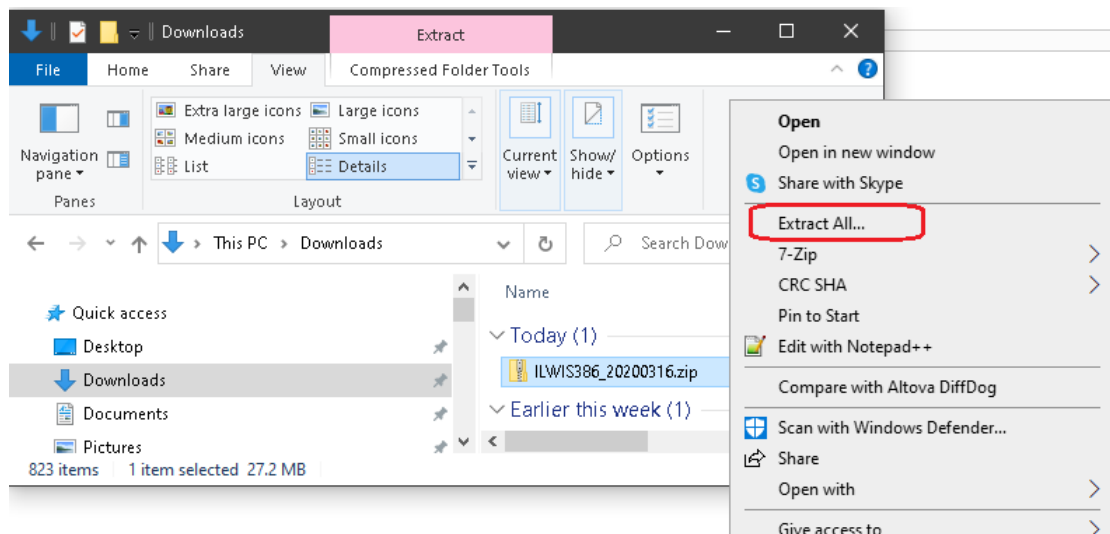


Figure 4: Zip filename extension



Now click on the downloaded ILWIS zip file with the *Right mouse button*, and from the menu that appears, select “Extract All...”.

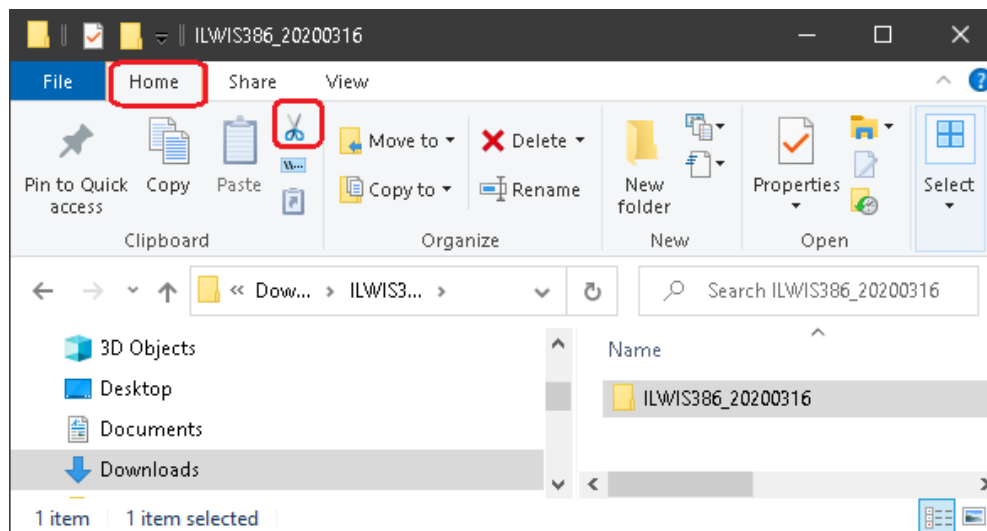
Figure 5: Extraction of the ILWIS Zip file

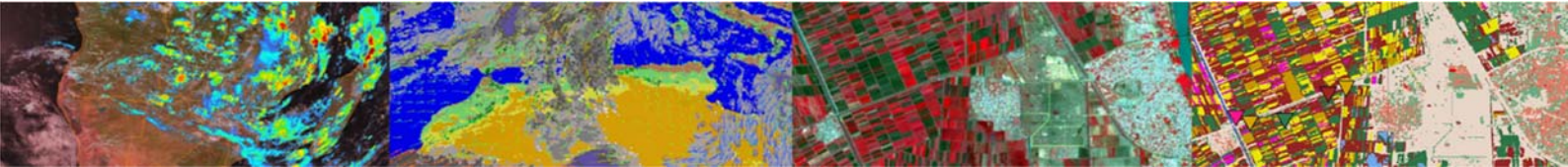


In the Extract Compressed (Zipped) Folders window that appears, keep everything as-is; just click “Extract”. Extraction will take about 1 minute, depending on the performance of your computer. When done, the Windows Explorer opens the extracted folder that was created.

Click on the extracted folder “ILWIS386_20200316” to select it, and then click the “Cut” button (see the scissors icon).

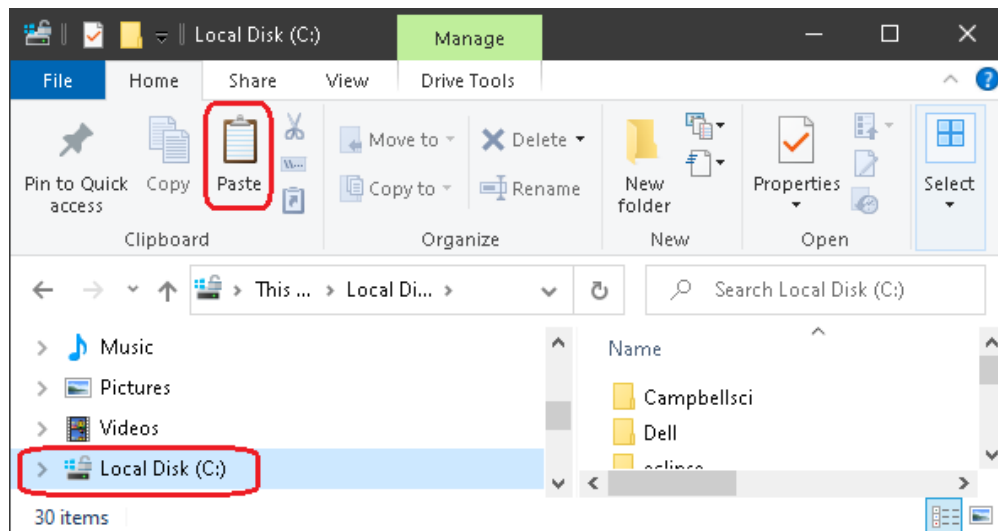
Figure 6: Cutting the extracted ILWIS folder





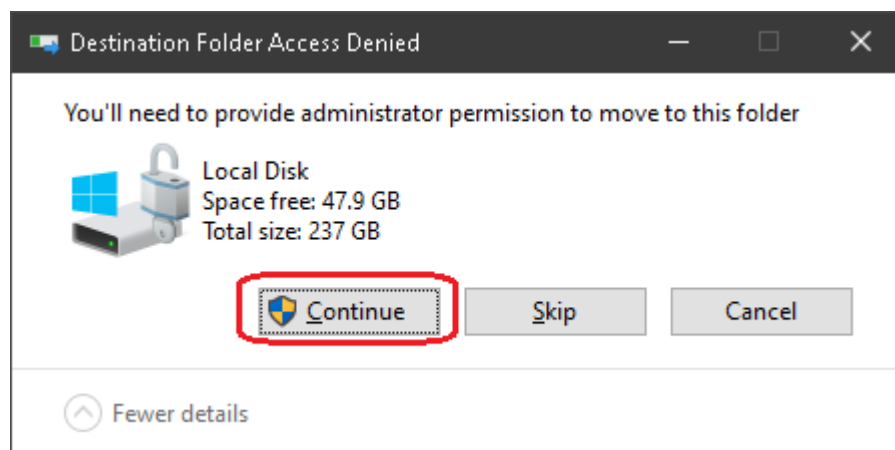
Now use the Windows Explorer to navigate to the “root” of the C: drive. Ensure the item “Local Disk (C:)” or “System (C:)” (depending on the name assigned to the drive) is selected in the left pane, and click the “Paste” button.

Figure 7: Pasting the extracted ILWIS folder on the C: drive

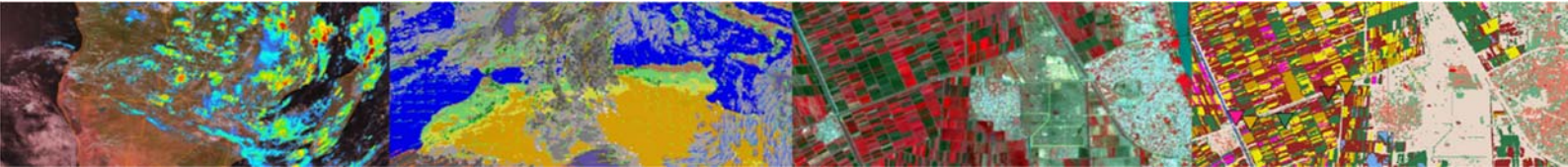


In case you don't have full administrator rights on your system, click “Continue” in the question that follows, see the figure below.

Figure 8: Continue pasting the extracted ILWIS folder



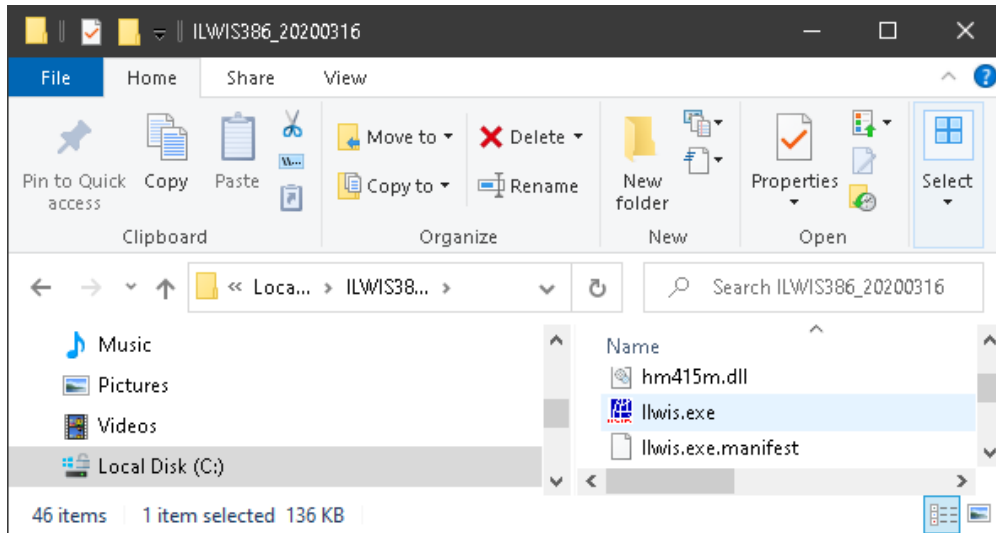
When done, the ILWIS software is moved from the Downloads folder to C:\ILWIS386_20200316 .



4. Create an ILWIS Shortcut on the Desktop

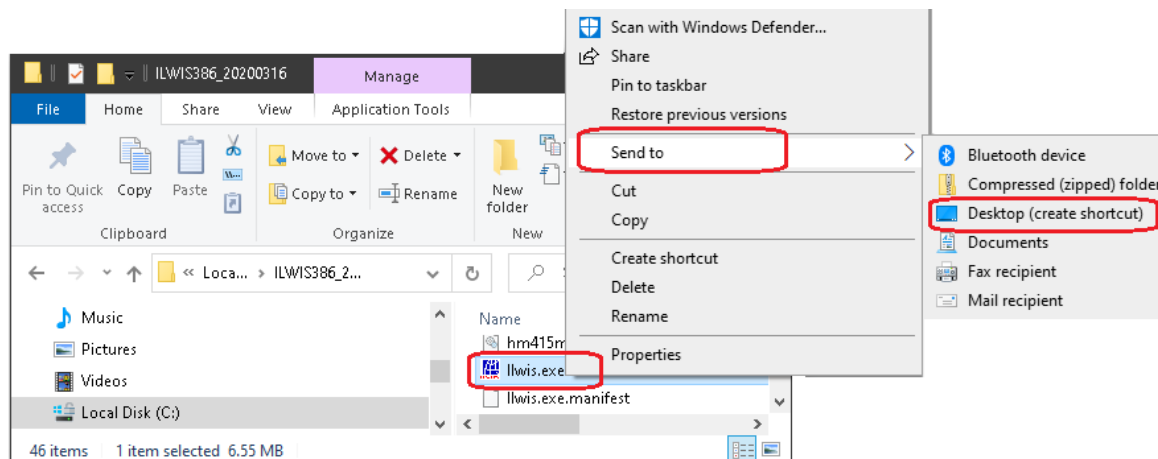
Navigate to the ILWIS folder (to C:\ILWIS386_20200316) to see the contents. One of the files is Ilwis.exe. Locate this file.

Figure 9: Locating Ilwis.exe in the ILWIS folder



Click on this file with the *Right mouse button*. From the menu that appears, select Send to → Desktop (create shortcut).

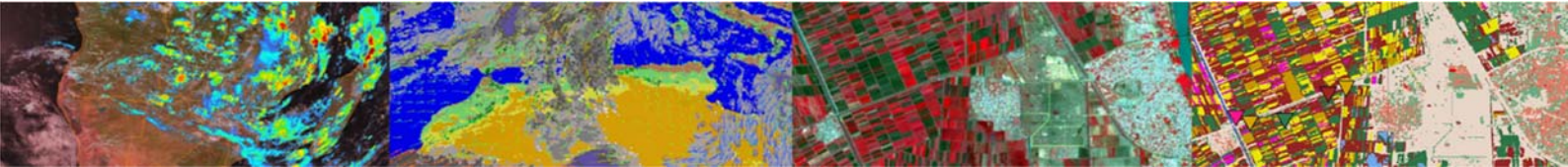
Figure 10: Creating a shortcut to Ilwis.exe in the ILWIS folder on the Desktop



Now you can close the Windows Explorer. A shortcut is created on the Desktop, that looks like the figure below (left). Optionally you can right-click with the mouse on the icon, select the rename option from the context sensitive menu, and rename this to something that is more appealing to you (right).

Figure 11: Shortcut to ilwis.exe on the Desktop





5. Start ILWIS for the first time

Double-click the ILWIS shortcut to start the ILWIS program.

It can be that the first time you start ILWIS you may receive a warning from the virus-scanner / Windows Defender. In this case you have to add ILWIS to the whitelisted apps of the computer.

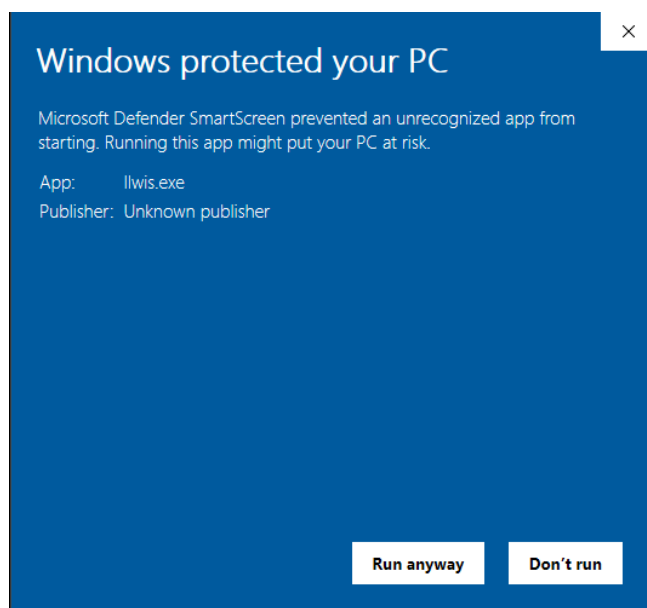
To do this, in the “Windows protected your PC” screen, click “More info”.

Figure 12: Virus scanner message - 1

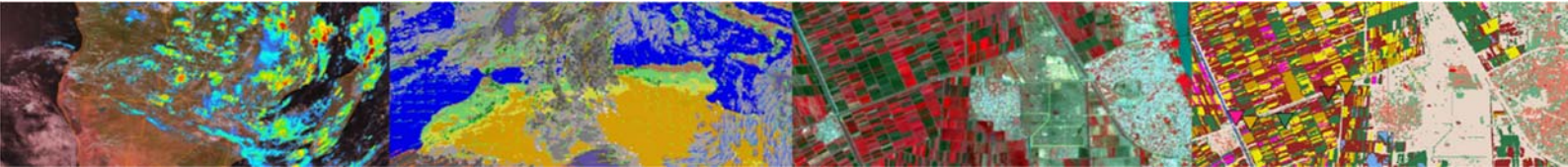


Then click “Run anyway”.

Figure 13: Virus scanner message - 2

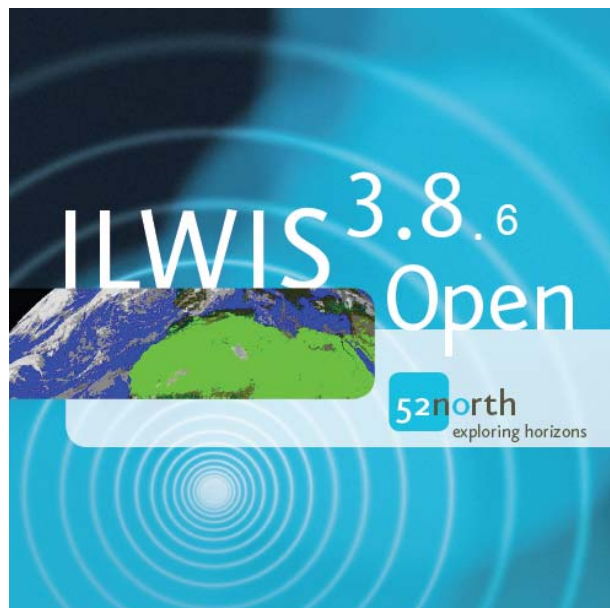


This adds ILWIS to the whitelisted apps of your computer. This setting is remembered, and you will not be asked this question again for ILWIS in this specific folder.



Then the ILWIS program starts. First the logo is displayed.

Figure 14: ILWIS start logo



Then the ILWIS Main Window appears. If you have not used ILWIS before, ILWIS starts with a Catalog (the right part of the ILWIS window) pointing to the location where ILWIS was installed.

If you see the following screen, then ILWIS has started correctly.

Figure 15: ILWIS catalog

