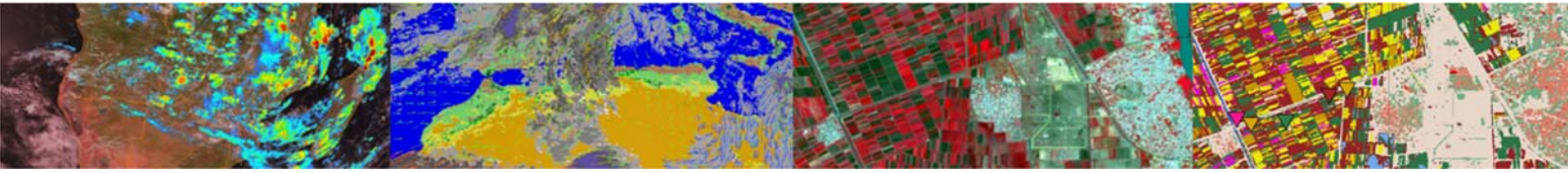


Downloading and Installing the Cabo Verde Toolbox

Ben Maathuis
19-02-2021

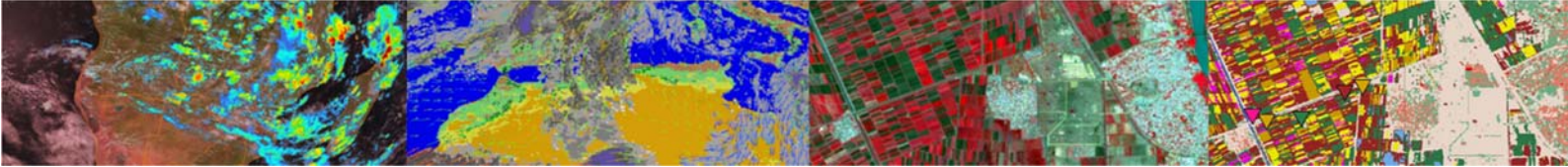


© This work is licensed under the Creative Commons Attribution-NonCommercial 4.0 License. To view a copy of this license, visit <https://creativecommons.org/licenses/by-nc/4.0/> or send a letter to Creative Commons, 444 Castro Street, Suite 900, Mountain View, California, 94041, USA.



Contents

1. Introduction	2
2. Download the Toolbox and ILWIS.....	2
3. Copy “toolbox” zip file to the ILWIS Extensions folder	3
4. Start the Geonetcast-toolbox for the first time.....	3
5. Golden rules when working with a toolbox plug-in.....	5



1. Introduction

The Cabo Verde-Toolbox is a plug-in, developed under ILWIS, a free and open source GIS software. Both are developed at ITC and 52north to support education and research in geo-sciences. The toolbox plug-in allows the processing of the data delivered through GEONETCast-EUMETCast data streams, relevant for land, ocean and atmosphere. See also the information provide on the system by EUMETSAT: <https://www.eumetsat.int/eumetcast>. Additional routines to extract information from online resources relevant for water and agriculture monitoring have been added. The plug-in works on a 64 bits Windows 7 and more recent Operating System.

2. Download the Toolbox and ILWIS

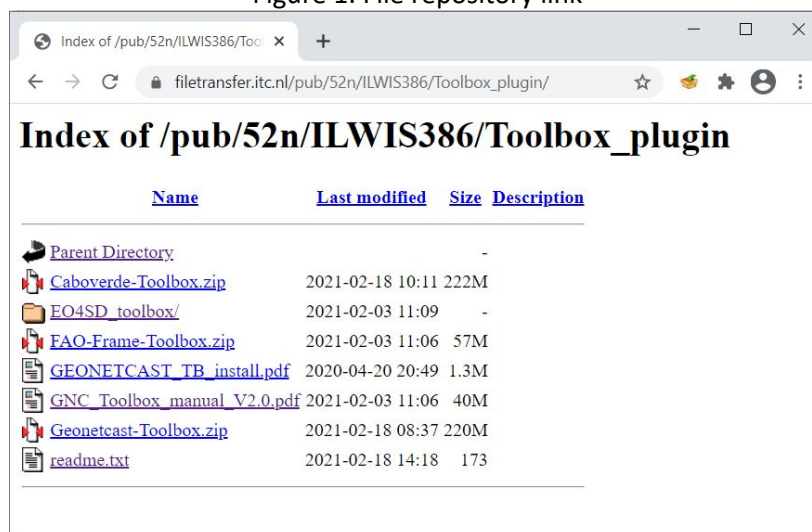
The latest official version of the Cabo Verde toolbox (currently version 1.0) and ILWIS (currently version 3.8.6) is freely available at <http://52north.org>. However, this document focuses on downloading and installing the most recent unofficial version from the following download link, which includes the newest functionality and bug fixes:

For ILWIS: <https://filetransfer.itc.nl/pub/52n/ILWIS386/Software/>

For Cabo Verde-Toolbox: https://filetransfer.itc.nl/pub/52n/ILWIS386/Toolbox_plugin/

The versions found in these link are updated more frequently, while 52north.org hosts the official releases. When navigating to this link, a list of files appears. The files correspond to several Toolbox Plug-ins developed for use with ILWIS.

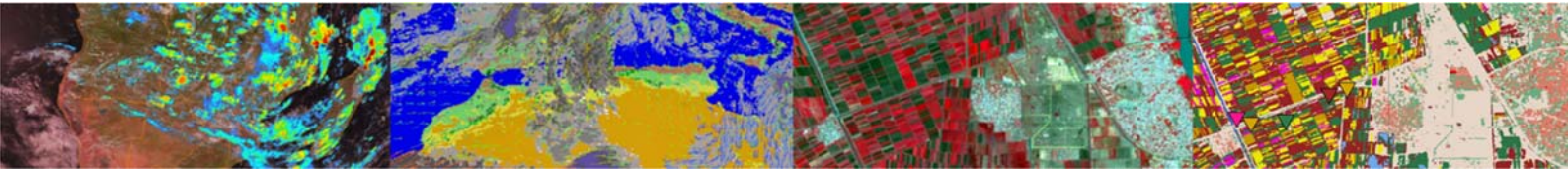
Figure 1: File repository link



Choose the required toolbox and click on the zip file to download it.

In a similar manner, using the link provided above, download the latest version of ILWIS386. At the time of writing this document this is ILWIS386_20201116.zip (version of 16-November-2020). The full installation instructions for ILWIS are given at: <https://filetransfer.itc.nl/pub/52n/ILWIS386/Tutorial/>.

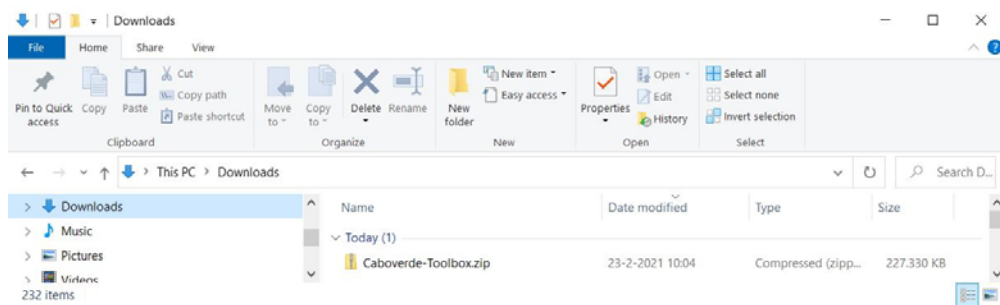
Download the file "ILWIS Installation Instructions.pdf" and follow the step by step description to install ILWIS. In this document it is assumed that the ILWIS installation instructions are strictly followed and the ILWIS software is situated in the folder "C:\ILWIS386_date", were "date" is the latest release of ILWIS, at the moment of writing this document: "20201116".



3. Copy “toolbox” zip file to the ILWIS Extensions folder

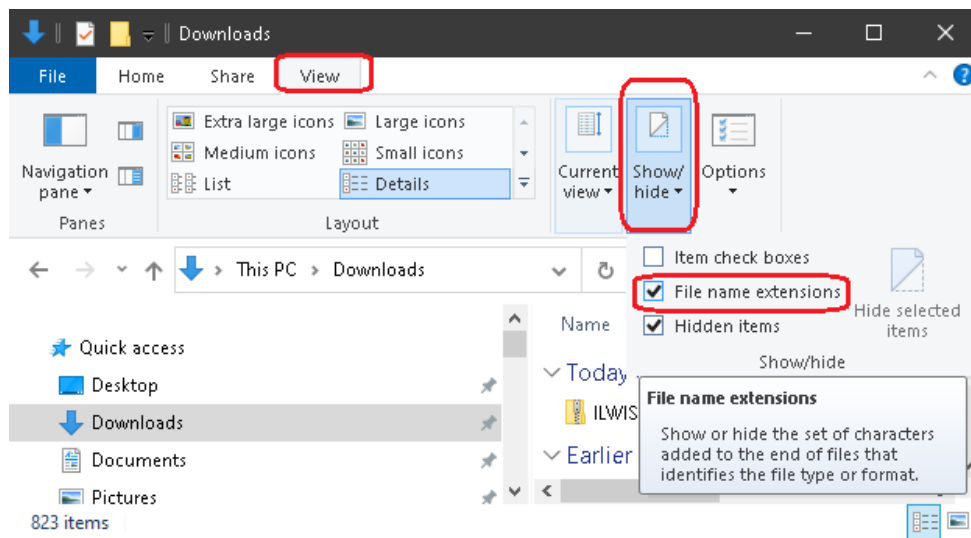
When downloading is done, the file is placed in your “Downloads” folder or another folder that you selected yourself (depending on your internet browser settings). Use the Windows' File Explorer to navigate to the downloaded zip file. Sort the files by date if you have difficulty locating the file.

Figure 2: Downloading the zip file in the downloads location



If you see the filename like above, without the extension .zip, make a change in the settings of Windows Explorer to show filename extensions. In the menu of the Windows' File Explorer, go to View → Show/hide, and enable the File name extensions according to the figure below.

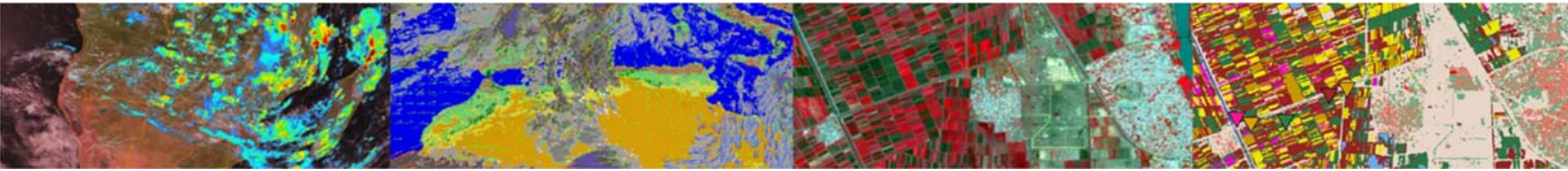
Figure 3: Show the zip filename extension



This will show the complete filename in the Windows' File Explorer, including the extension .zip. Now “Copy” and “Paste” (or “Cut” and “Paste”) the file “CaboVerde-Toolbox.zip” to the folder “C:\ILWIS386_date\Extensions”

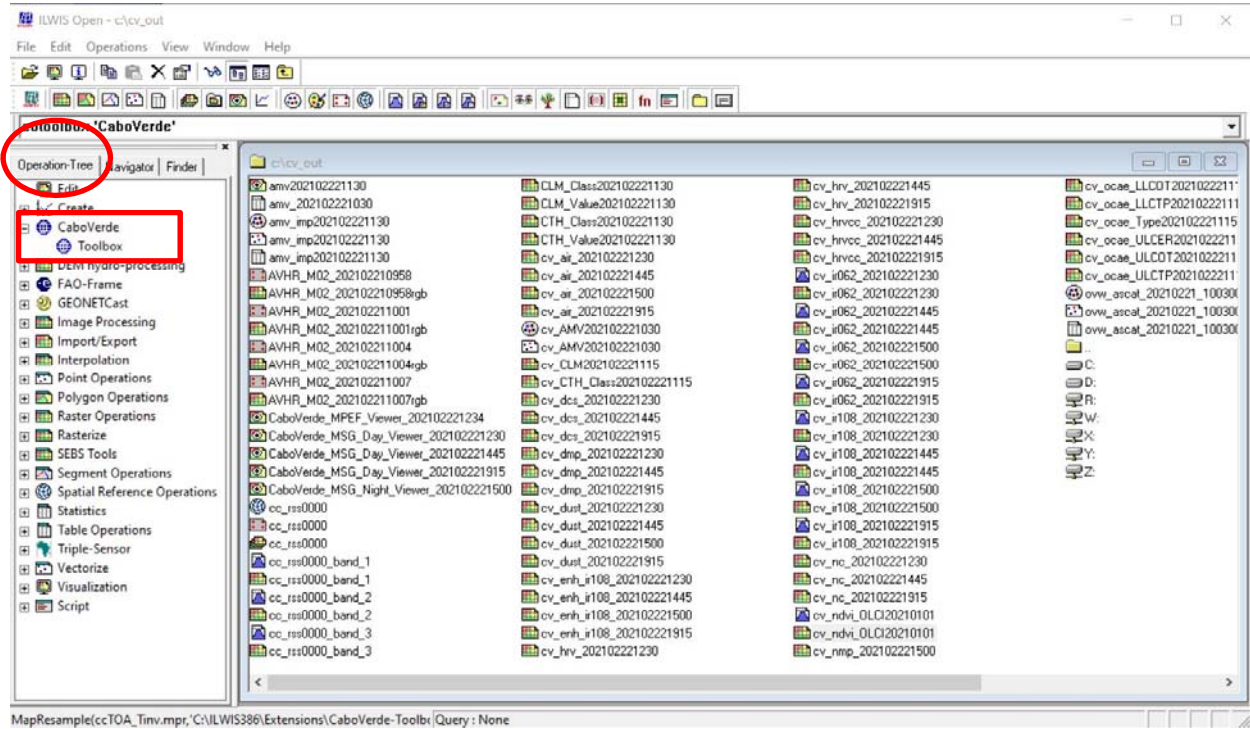
4. Start the CaboVerde-toolbox for the first time

Double-click the ILWIS shortcut to start the ILWIS program. During the first time you start ILWIS after you have copied the “CaboVerde-toolbox.zip” file to the “\Extensions” folder you may have to wait a little longer before ILWIS starts, as the zip file content is extracted and added to the ILWIS folder “\Extensions\CaboVerde-Toolbox”.



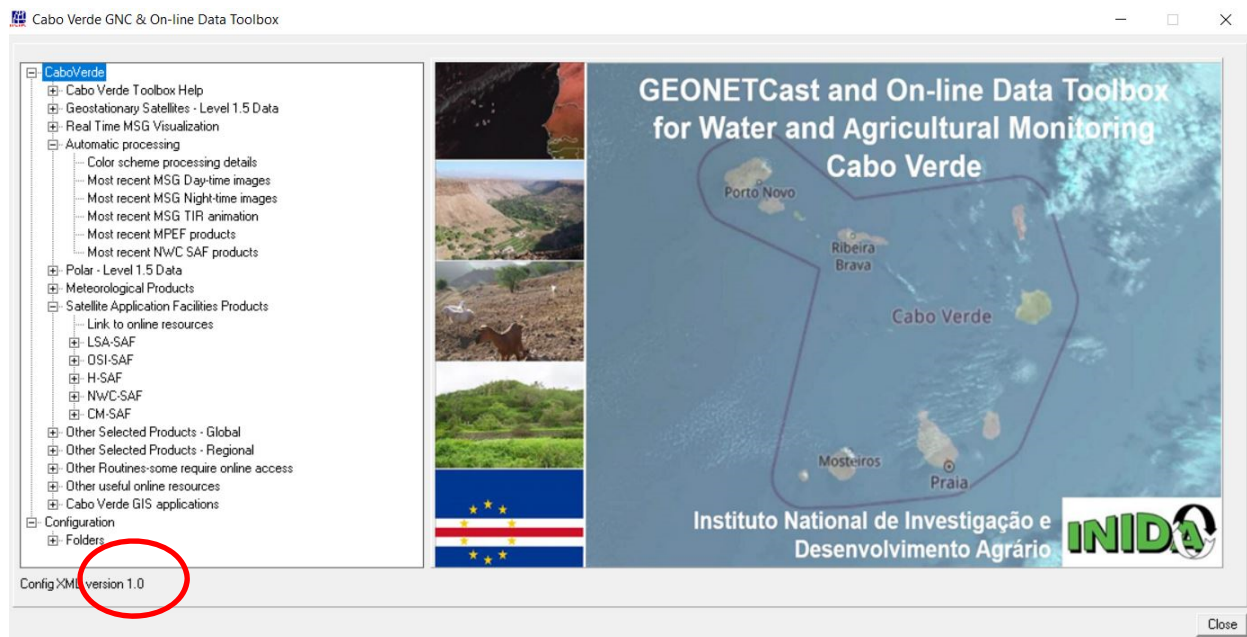
Once the ILWIS catalog has been displayed the toolbox is added to the ILWIS menu, see also the figure below. Ensure that in the left hand menu the “Operation-Tree” Tab is activated.

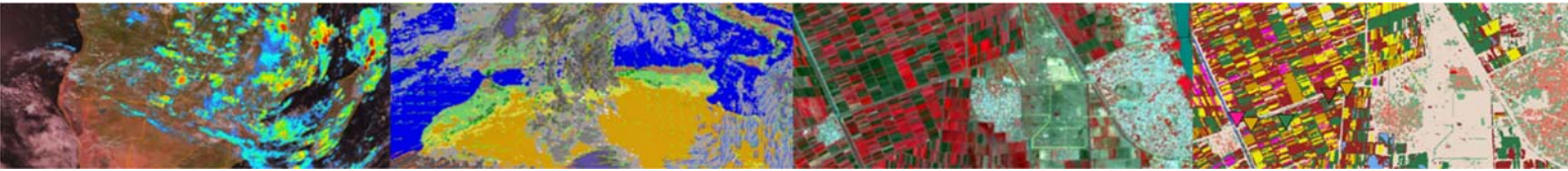
Figure 4: Locating the Geonetcast-Toolbox in the ILWIS catalog



To open the CaboVerde-Toolbox, click with the mouse on the menu item “CaboVerde” and “Toolbox” and the main menu appears as given in the figure below, note also the toolbox version number.

Figure 5: The Cabo Verde-Toolbox menu





Toolbox version 1.0 and higher are developed using the functionality of ILWIS 386. The toolbox expects next to ILWIS-386, a 64 bits Windows Operating System with a recent version of JAVA installed.

5. Golden rules when working with a toolbox plug-in

Please take into consideration, straight from the start, the following golden rules when using ILWIS and toolbox plug-ins:

- Don't use spaces in (sub-) directory or file names, instead use underscores;
- Do not only use numbers as file names;
- Do not work in multiple output directories;
- Start ILWIS, navigate to your working directory and close ILWIS. Open ILWIS again to ensure that your current working directory is also the actual ILWIS working directory.

Smooth operations are experienced when the ILWIS folder as well as the working directory are situated in the root of your system drive, without spaces in folder names!