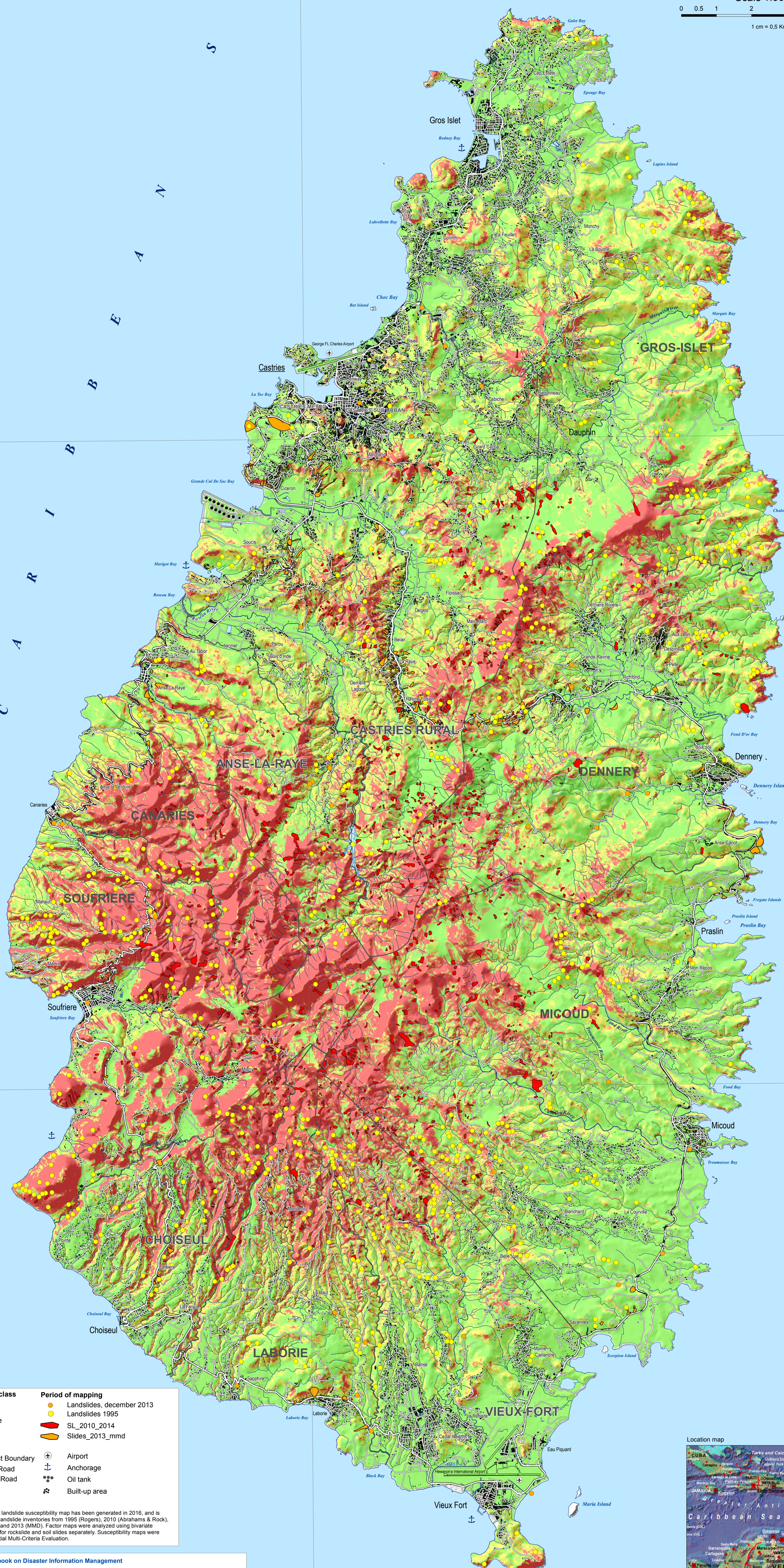


Saint Lucia

Landslide Susceptibility

Scale 1:50,000
 0 0.5 1 2 3 4 5 Kilometers
 1 cm = 0.5 Km.



Susceptibility class	Period of mapping
Low	Landslides, december 2013
Moderate	Landslides 1995
High	SL_2010_2014
	Slides_2013_mmd

Topography	Other
District Boundary	Airport
Main Road	Anchorage
Other Road	Oil tank
River	Built-up area

This national-scale landslide susceptibility map has been generated in 2016, and is based on detailed landslide inventories from 1995 (Rogers), 2010 (Abrahams & Rock), 2010-2014 (BGS), and 2013 (MMD). Factor maps were analyzed using bivariate statistical analysis for rockslide and soil slides separately. Susceptibility maps were made through Spatial Multi-Criteria Evaluation.

Caribbean Handbook on Disaster Information Management

Version April 2016
 Data Analysis: Dr. Coes van Westen (ITC)
 Cartography: Koert sijmons (Geomapa)

ACP-EU Natural Disaster Risk Reduction Program

WORLD BANK GROUP

www.chrim.net

