

Geomorphological hazard map, Barranco de Tirajana area

Gran Canaria, Spain

442000m

44

46

48

450000m

3094000m

92

90

88

86

84

3082000m

3094000m

92

90

88

86

84

3082000m

High hazard

- High hazard to rockfall
- High hazard for rapid landslides
- High hazard for earthflow
- High hazard for reactivation of landslides

Moderate hazard

- Moderate hazard for rockfall
- Moderate hazard for rapid landslides
- Moderate hazard for reactivation of landslides
- Moderate hazard for earthflow

Low hazard

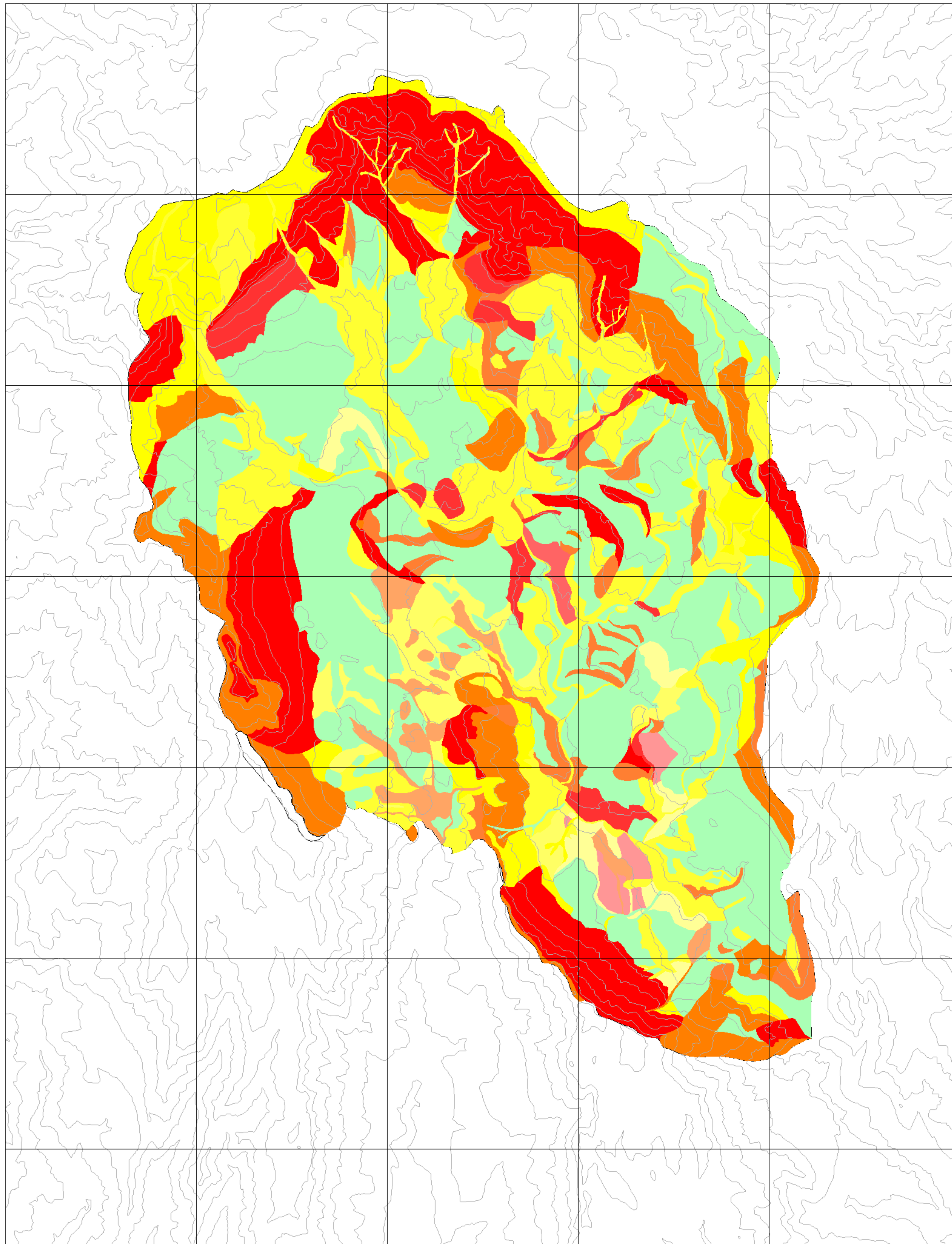
- Low hazard for rapid landslides
- Low hazard for rockfall
- Low hazard for reactivation of landslides
- Low hazard for earthflow

Very low hazard

- Very low hazard

topography

- Main contourlines
- hazard outline



442000m

44

46

48

450000m

Scale 1:75000

Metre 500 0 500 1000 1500 2000 2500 Metre

