

Geomorphological evolution of the Tessina landslide (Alpago, Italy), Scale 1:10,000



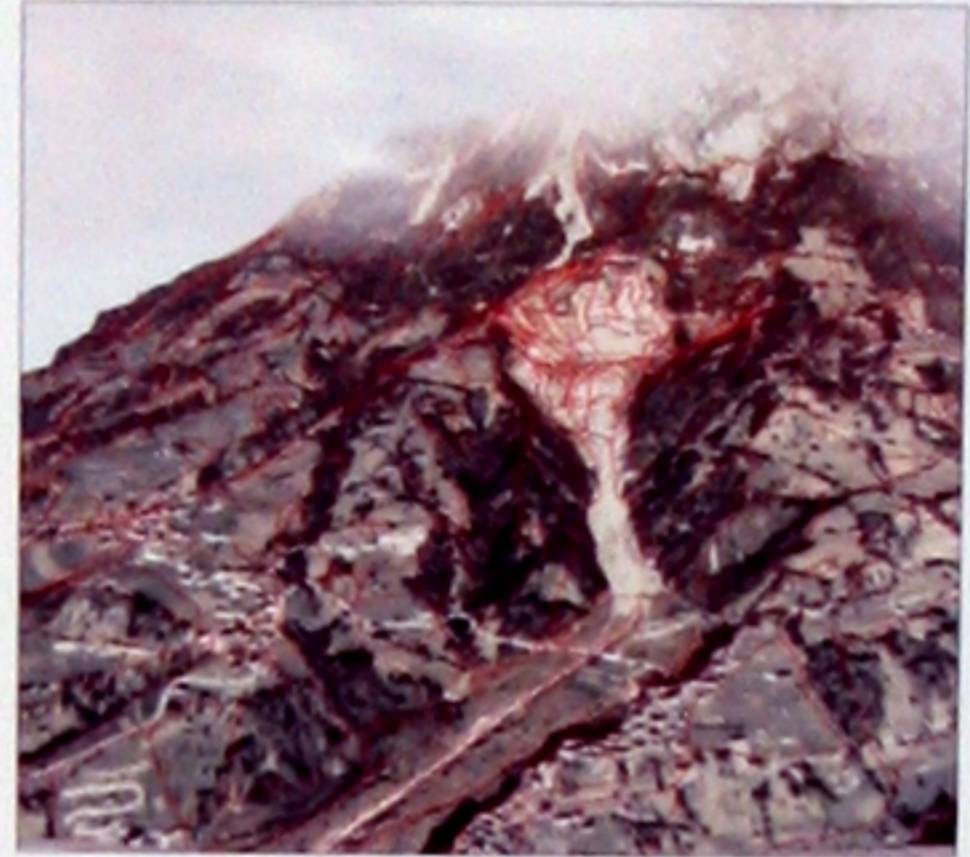
- Landslides**
- Landslides excluding tessina landslide
 - Rotational landslide
 - Complex landslide
 - Debris slide
 - Tessina land slide
 - Pre 1960 rotational scarp
 - Pre 1960 rotational head scarp
 - Pre 1960 rotational right lateral scarp
 - Pre 1960 rotational left lateral scarp
 - Pre 1960 rotational body
 - Pre 1960 rotational flow
 - Pre 1960 rotational intermediate scarp on the body of the landslide
 - Post 1960 landslide body with limited displacement
 - Post 1960 upper main scarp
 - Post 1960 initiating landslide
 - Post 1960 main scarp
 - Post 1960 body of landslides
 - Post 1960 body of landslides flow
 - Post 1960 body of landslides slide turning into flow
 - Post 1960 body of landslides debris flow accumulation
 - Post 1960 body of landslides main flow
 - Pond

- Denudational landforms**
- Denudational valley
 - Denudational valley: Wide
 - Denudational valley: Narrow
 - Denudational valley side
 - Valley bottom
 - Denudational hill
 - Denudational slope
 - Denudational colluvial slope
 - Scree slope
 - Scree fan
 - Rockfall area
 - Denudational Remnant ridge(hill)

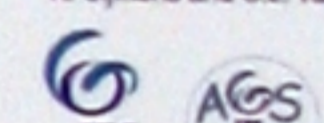
- Structurally controlled landforms**
- Near vertical dip slope in limestone
 - Hill or slope due to lithological differences
- Glacial and Fluvio-glacial landforms**
- Glacially eroded level
 - Glacially eroded slope
 - Fluvio-glacial terrace
 - Fluvio-glacial valley
 - Morainic ridge
 - Ice marginal level related to the maximum extent of local glacier
 - Ice marginal level related to the maximum extent of Piave glacier
 - Glacially eroded valley side

- Anthropogenic landform**
- Ditch
 - Quarry
 - Flat area due to road construction

3-D view of Tessina landslide



Field mapping and digital map production:
Faal Lulie (Ethiopia)
Digital Cartography:
K. Simons and C.J. van Westen



Changes in landslide types between 1954 and 1999



- Landslide types**
- Complex slide type
 - Multiple rotational slide
 - Single rotational slide
 - Debris slide
 - Flowslide
 - Flow

Changes in landslide activity between 1954 and 1999



- Landslide activity**
- Not active
 - Less active
 - Moderately active
 - Very active

Differences in elevation measured from Digital Elevation Models

