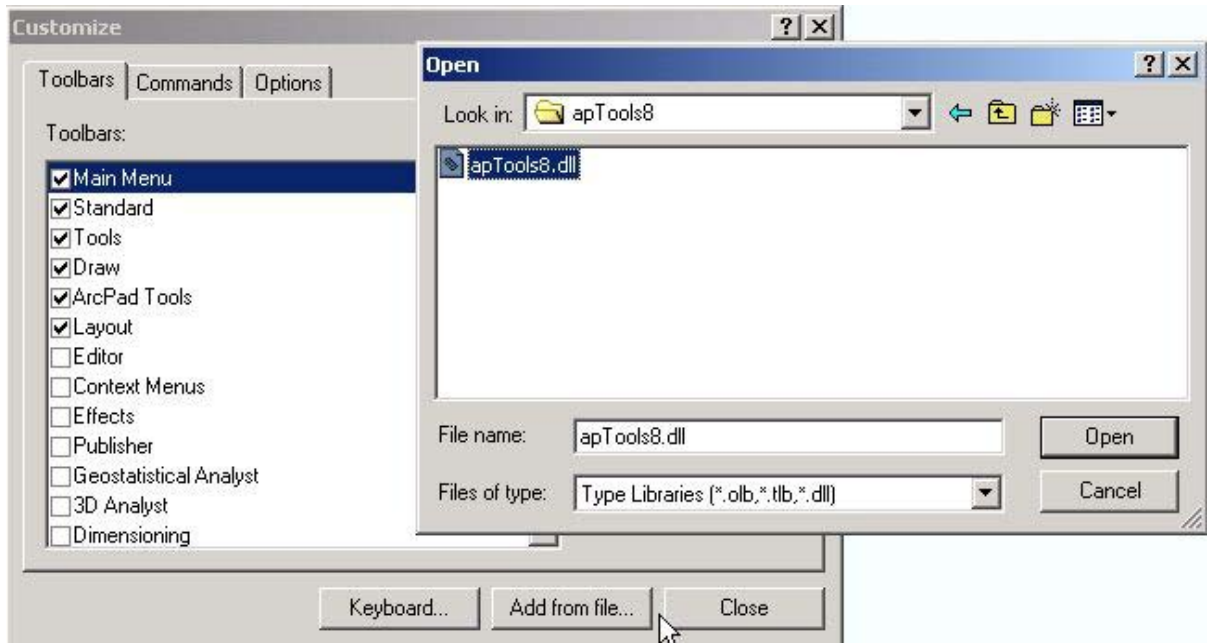


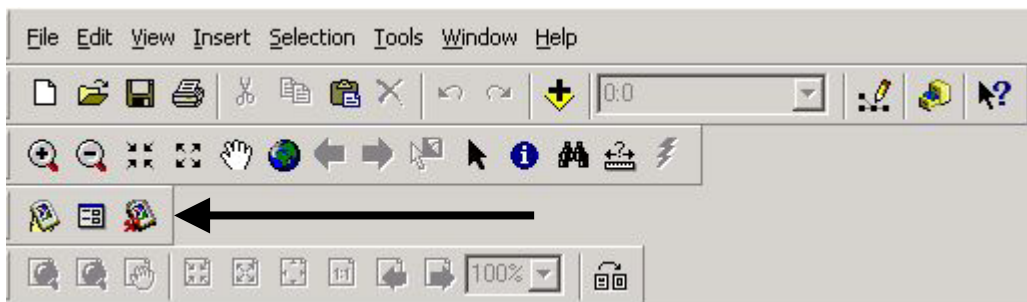
Chapter: Final Data Preparations for ArcPad

1. Using the ArcPad extension in ArcMap

Before preparing the final files, the Arcpad extension must be added to ArcMap. After starting ArcMap, select “Tools – Customize”, and find on your PC the indicated dll file in the directory where ArcPad is installed.



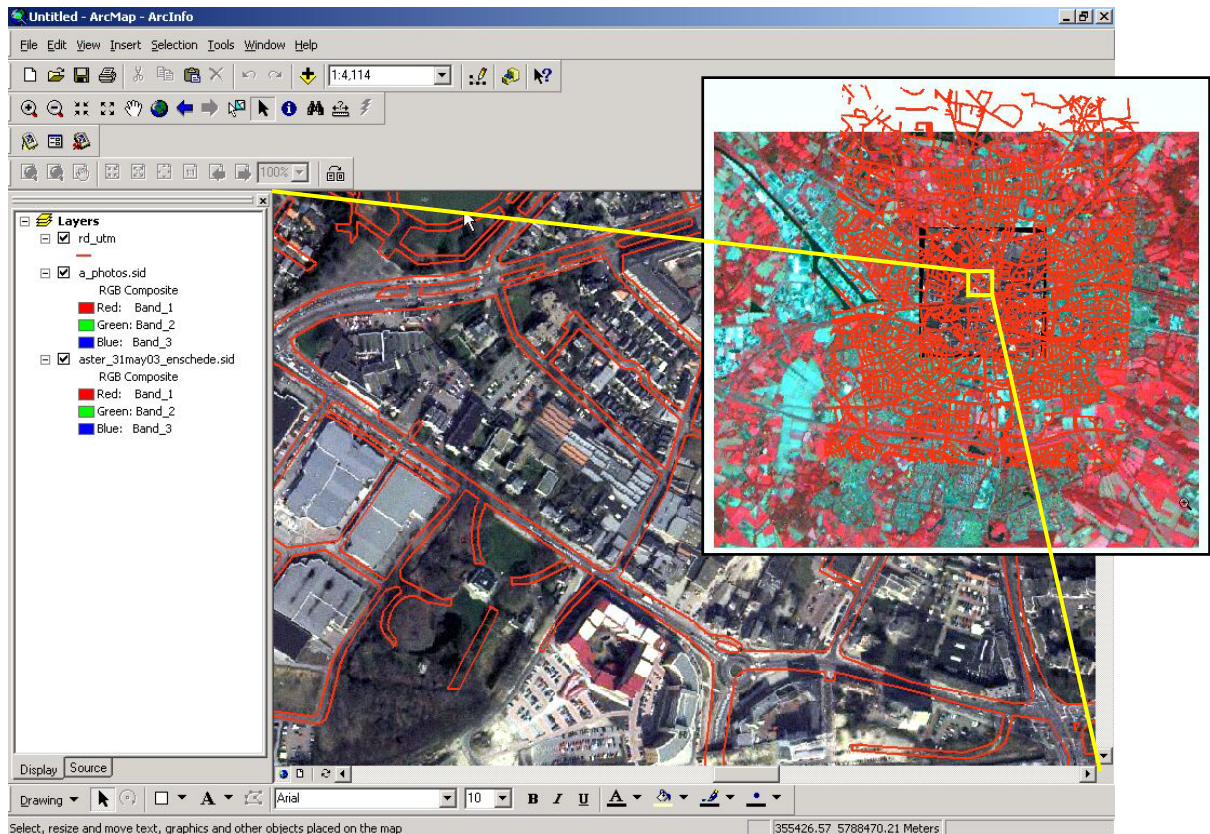
Once the add-in extension is installed and also selected in the “Customize” window, the following three icons are added to the main ArcMap window.



2. Final Data Preparation

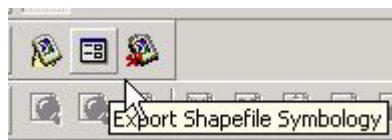
Please load with the “+” button all required image and vector files in ArcMap. Your screen may look as below. Make sure each layer has the proper band combination in RGB and each vector layer the required color-coding.

Note: make color-coding adjustments by double-clicking on the layer names. Edit the symbology settings as required.



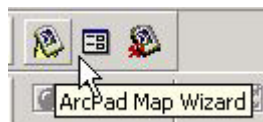
3. Writing the ArcPad files

The used symbology can be saved with the prepared files by clicking the following icon:



The prepared layout is then ready to write to a **new** directory...pls.make that directory first!!

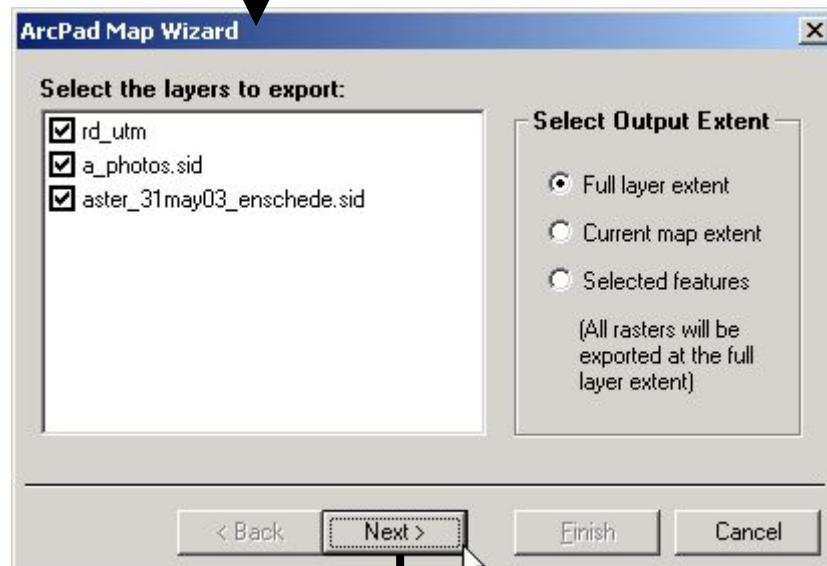
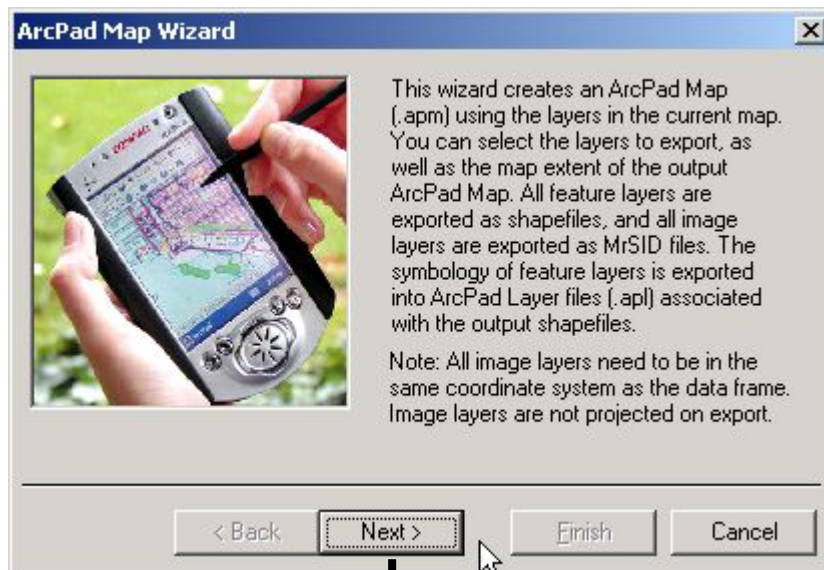
Click the following icon to start a “wizard”. Specify the requirements and write to the prepared directory. Then copy that directory to your iPaq.....all is done for fieldwork.



See the next page for some wizard screens.

Note: ArcMap automatically prepares the required *.prj files for ArcPad.

Note: Select a sub-area to export if your vector files tend to get bigger than 2MB. The iPaq can just about handle such file sizes.



Start ArcPad on you iPaq and load the prepared *.APM file.