

UNIVERSITY OF TWENTE.

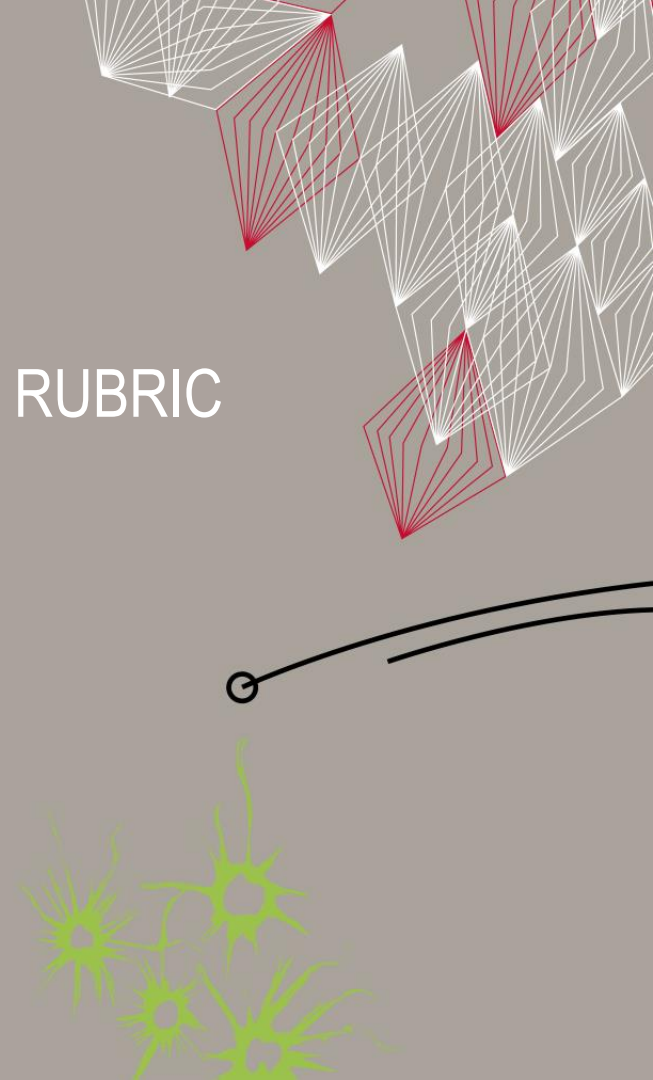
# EXPERIENCES WITH PLAGIARISM RUBRIC IN M-GEO ACADEMIC SKILLS

CHRIS HECKER

2021 NOVEMBER 24

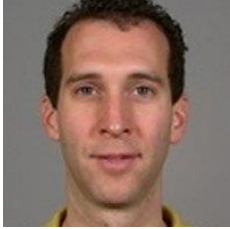


FACULTY OF GEO-INFORMATION SCIENCE AND EARTH OBSERVATION



# TEAM

---



Chris (Coord.)



Marlies (support)



Roshanak (NRM)



Diana (UPM)



Liza (GIMLA)



Hossein (GFM)



Peter (GFM)



Marloes (WRS)



Norman  
(ARS&NHR)



Katinka and  
Grietha (Library)





# BACKGROUND

---

- Q4 assignment AY2018: many plagiarism fraud cases
  - => no grade; no feedback
  - => no 2<sup>nd</sup> test opportunity (if 2<sup>nd</sup> “strike”)
  - => no continuation into research phase year2
  - => lots of work for examiner, ProgManager, EB
- But observation: Often not intentional fraud but wrongly citing



## BACKGROUND (2)

---

- Problems with that were:
  - Demotivating for students
  - Frustrating for Grader
    - no tool until fraud (turn blind eye if not severe)
    - no stimulus / consequence for student until fraud call
  - No grading done / no feedback / no learning done by student (on plagiarism as well as assignment)



# OUR APPROACH

---

- Exchange with Programme Manager and EB August/September 2019
- Our thinking:
  - Teach over punish
  - Cheating is always fraud.
  - Poor referencing while learning is poor execution of the assignment.
  - Poor referencing after learning (AS completed or Year2) is fraud.



## OUR APPROACH (2)

---

- First go by the MGEO AS Team (Sep 2019)
- Review of old examples from Academic Skills course;
  - 8 categories of typical infringements;
  - weighing of their severity by experienced graders
  - “Sloppy table” (Malintent vs. sloppiness)



# OUR APPROACH (3) – EXAMPLE CATEGORY

---

5. → A large number of **overlapping words, without referencing**. Still some level of own logic visible in that the text has been applied to the own situation. Nevertheless, the source should have been cited properly. (Example Zoltan-3). ¶

achieve with global coverage due to the spatial and temporal variability of soil moisture and the weather and climate conditions and across all current passive microwave observations.

This research will develop the scaling approach for soil moisture products, which will use high resolution model predictions together with data assimilation of coarse scale observations. It will overcome issues related to the lack of concurrent overpasses by required satellites or lost data due to cloud coverage, and It will integrate different inputs data such as multiple satellites data and UAVs data products. It will be validated directly against ground-based soil moisture observations, For the suitable application of high-resolution soil moisture in agriculture and water resources management, UAVS data will give the continuous time series of soil moisture which will be required at temporal frequencies less than three days. ¶

# OUR APPROACH (4) – RUBRIC

- Assignment Q2 AY2019 extra rubric criterium
- 8 classes into 10% to 80% deduction (later changed to max 50%) or fraud
- Percentage over fixed amount deduction

Plagiarism deductions	0 Pts % Full score	0 Pts 10% deduction	0 Pts 20% deduction	0 Pts 30% deduction	0 Pts 50% deduction	0 Pts Fraud = no grade
This criteria shows problems with the proper use of referencing that leads to plagiarism	No problems detected All citations, quotes and referencing done according to the "rules," e.g., all	Appropriate quotation of a sentence or major part of a sentence	A large number of overlapping words, but referenced properly. Better phrasing in	A large number of overlapping words, without referencing. Still some	Copying of an entire sentence or more (or the equivalent of it)	Copying of an entire paragraph or more (or the equivalent of it)





# OUR EXPERIENCES

---

- 2020 Q4 statistics
  - 86 submissions; 28 deductions (33%)
  - 25 marks <6
  - No fraud case this time (but they do occur)



## OUR EXPERIENCES (2)

---

- Staff say:
  - Students with **milder infringements** get feedback that this is **not OK** while in the past they just got away clean
  - Students with **slightly stronger infringements** get feedback that this is **not OK**, get a reduced grade but also feedback on the quality of the content of their submission (with fraud calls, the submission is not graded and no feedback is given).
  - **Fraud is still fraud** (we do have cases!)
  - there are now **more objective criteria** for the grader to judge the different levels of infringement



## OUR EXPERIENCES (3)

---

- Lessons learnt / ideas
  1. Feedback in CANVAS criteria is key for learning of student
  2. Percentage deduction is cumbersome in CANVAS and leads to errors => needs a fix
  3. Frequency of infringement is not captured => include in grading instructions
  4. Do not over-regulate! (current level is OK)
  5. Make simCheck examples available
  6. Make students own simCheck available
  7. Check simCheck results “UTwente Submitted works” carefully

# OUR EXPERIENCES (4)

4. Percentage deduction is cumbersome in CANVAS and leads to errors => needs a fix

Plagiarism deductions  
[view larger description](#)

0 pts % Full score	No problems detected. All citations, quotes and referencing done according to the "rules," e.g., all intellectual property of other people is referenced to the source; - quotes used are appropriate (needed for the argumentation), are correctly marked with quotation marks and with a citation which includes the page number; text has been paraphrased into the words of the student.
0 pts 10% deduction	Appropriate quotation of a sentence or major part of a sentence with referencing, but no quotation marks and/or no page number with the reference. OR Patchwork/ Mosaic of short segments within the sentences. Typically the longer pieces are referenced to the correct source. Shows the student's effort to try to collect relevant information from several sources and apply it to their own sentence. The logic of sentence is from the student, but rephrasing into own words was incomplete.
0 pts 20% deduction	A large number of overlapping words, but referenced properly. Better phrasing in own words would have been needed. OR Quotation of a sentence or a major part of a sentence that is NOT needed as a quote for the argumentation, but with referencing, but no quotation marks and/or no page number with the reference.
0 pts 30% deduction	A large number of overlapping words, without referencing. Still some level of own logic visible in that the text has been applied to the own situation. Nevertheless, the source should have been cited properly.
0 pts 50% deduction	Copying of an entire sentence or more (or the equivalent of it) without referencing.
0 pts Fraud = no grade	Copying of an entire paragraph or more (or the equivalent of it) without referencing OR Copying from results of the same assignment of this year or previous years is a fraud (threshold 1 whole sentence or more; or the equivalent of it (in case there are small changes)) OR Submitting own work that has been submitted earlier in the course for a grade is a fraud. (threshold: 1 whole paragraph or more; or the equivalent of it (in case there are small changes)) Fraud cases will be treated according to the "Education and Examination Regulations" (EER) and the "Rules and Regulations" (R&R) documents.

Total points: 9 out of 10

Save Cancel



## OUR EXPERIENCES (5)

---

4. Frequency of infringement is not captured => include in grading instructions

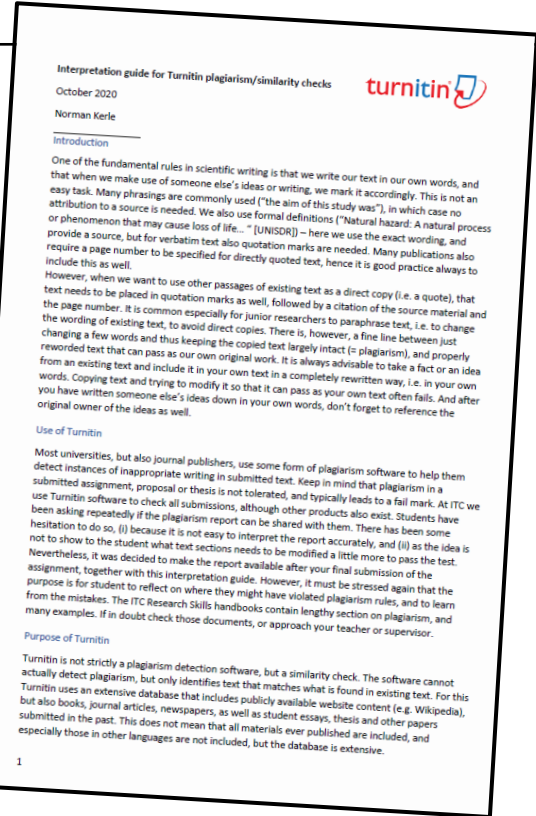
### **From grading alignment meeting**

We strictly flag infringements of plagiarism (as defined in the rubric and the example sheet). If a heavier infringement is incidental, the graders are allowed to reduce from the heavier categories to a lower one if the deduction would otherwise be disproportionate to the overall text. But any detected infringements will always result in some deductions (at least 10%). (sorry this sounds almost like legal text; I think all present will know what I mean, but I can imagine that [...] you would like this explained; let me know).

# OUR EXPERIENCES (6)

5. Make simCheck examples available => tricky, needs permission  
=> Go through some examples together (before Q2 assignment)

6. Make students own simCheck available  
=> After grading completed  
=> With interpretation guide





# ISSUES TO BE SOLVED

---

- Subtraction by percentage in CANVAS needs solution
- Severity vs frequency (probably OK as is)
  
- Hard to capture
  - Copied figures
  - Copying of ideas (but thoroughly rewritten)