

UNIVERSITY OF TWENTE.



Corporate introduction: ITC

Tom Loran
Chris Hecker
Freek van der Meer



FACULTY OF GEO-INFORMATION SCIENCE AND EARTH OBSERVATION

UNIVERSITY OF TWENTE.



UNIVERSITY OF TWENTE.

HIGH TECH HUMAN TOUCH

- An entrepreneurial campus university established in 1961
- More than 10,000 students
- 3,300 staff





UT IN ONE SLIDE

Six faculties

- Engineering Technology
- Electrical Engineering, Mathematics and Computer Science
- Behavioural Sciences
- Geo-Information Science and Earth Observation (*ITC)
- Management and Governance
- Science and Technology

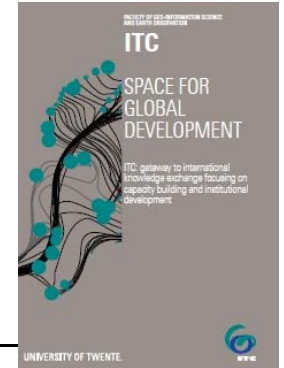
Four research institutes

- **CTIT** Centre for Telematics and Information Technology
- **IGS** Institute for Innovation and Governance Studies
- **MESA+** Institute for Nanotechnology
- **MIRA** Institute for Biomedical Technology and Technical Medicine

Virtual institutes

- Twente Graduate School (MSc+PhD)
 - ATLAS “university college”
-and numerous ‘centers’, ‘clusters’ etc.

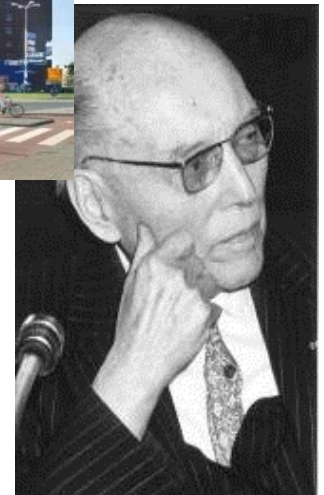




Faculty ITC – formerly Institute ITC

- **Established:** 1950 - Appeal by UN in framework of official development assistance - ODA
- **Aim:** Build capacity for economic development in developing world
- **Main instrument:** Postgraduate education and training, research, project services
- **Main field of science:** earth observation, geoinformation science applied to problem-solving in earth sciences, natural and water resources and urban studies
- **Achievements**
Education and training:
20 000 mid-career professionals

Dean/Rector
Prof. Veldkamp



Founding father
Prof. Schermerhorn



UNIVERSITY OF TWENTE.

EDUCATION PARTNERSHIPS





EARTH SCIENCES@ITC



ITC UNIVERSITY OF TWENTE.



EARTH SCIENCES @ ITC

Earth Scientists at Fac. ITC strive at applying relevant geo-information for understanding earth surface and geological processes, the sustainable use of geo resources, and the use of geo-science in the mitigation of natural or man-made damage to our environment.

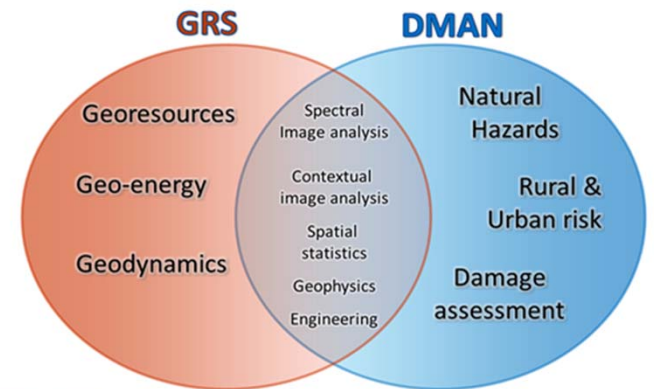
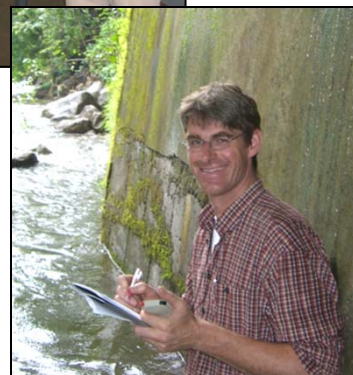
Chair Prof. Freek van der Meer

- Geo-resource exploration
- Geo-energy
- Geo-dynamics

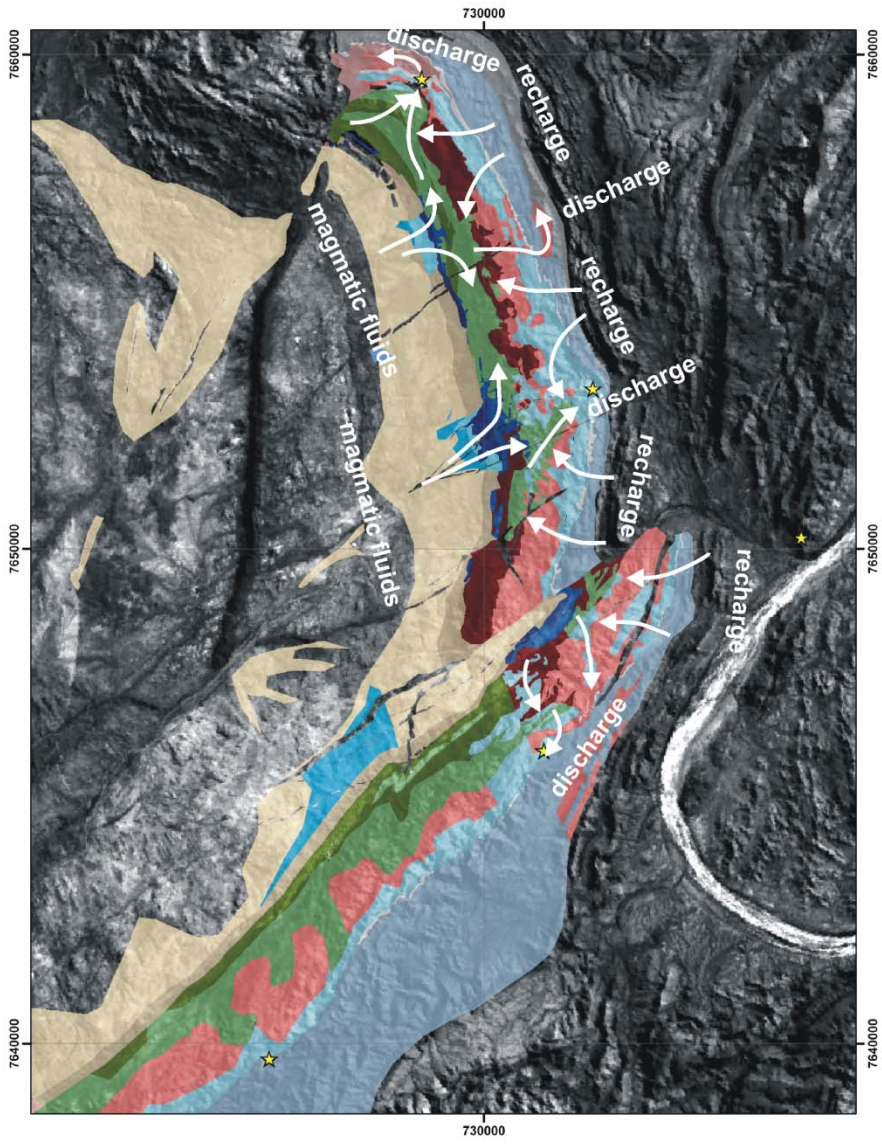


Chair Prof. Victor Jetten

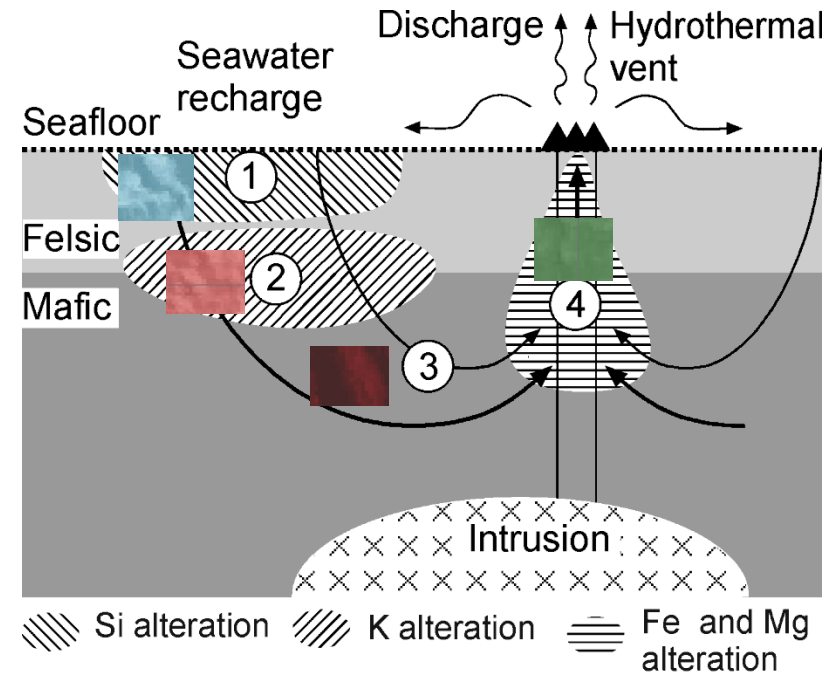
- Geohazard analysis
- Multihazard Risk Assessment
- GI for Disaster Management



4D – EARTH GEOLOGICAL REMOTE SENSING



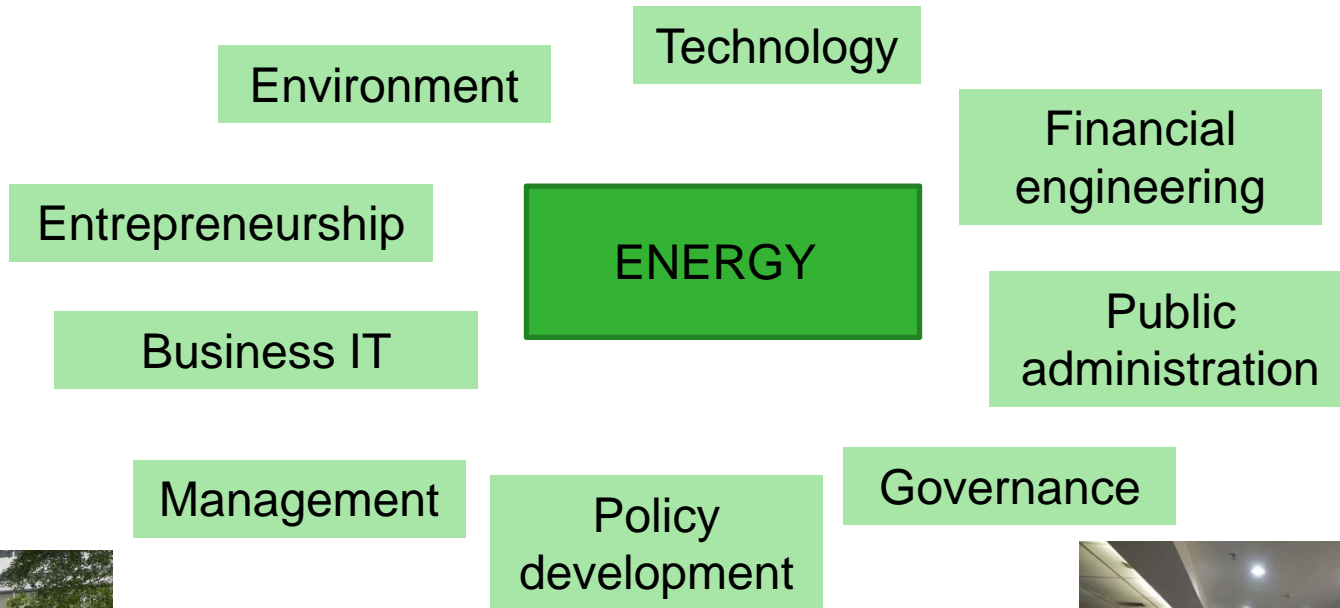
- 150 - 210°C Seawater recharge-related low temperature Si-altered felsic rock
- 200 - 250°C Recharge-related medium-temperature K-altered felsic and mafic rock
- 210 - 310°C Medium-temperature somewhat K-altered mafic rock
- 250 - 400°C Fluid-discharge-related high temperature Fe- and Mg-altered felsic and mafic rock





ENERGY UT WIDE

The theme of New and Renewable Energy is looked at from a variety of angles because it is not a technology issue alone



UNIVERSITY OF TWENTE.

ENSCHEDE
THE NETHERLANDS
WWW.ITC.NL



FACULTY OF GEO-INFORMATION SCIENCE AND EARTH OBSERVATION

